

# CHESTNUT C3 Max Pro

Sharp Burrs with Hardness HRC55-58  
Cut Beans fast and consistently

---



# Product Features



## High Sharpness Burrs



Precise CNC cutting



## Consistent Grinding



Dual bearings to fix center shaft



## Smooth Grinding



Solid Texture for tight hand grip



## Precise Coarseness



Point to point adjustment

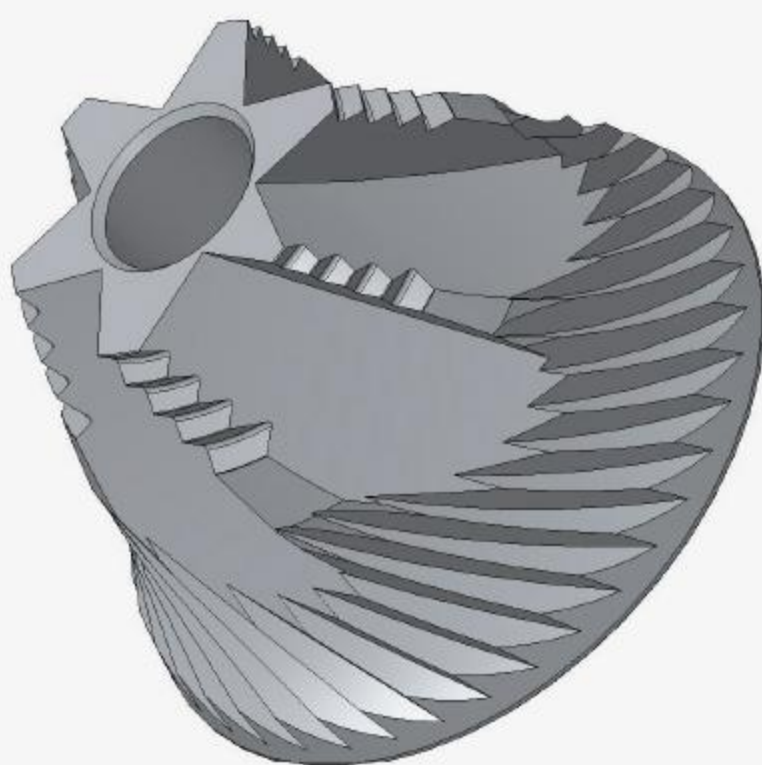
# What is Professional Manual Grinder?

---

Professional hand grinder with Premium Quality burrs and High accuracy



# Original Patented S2C660 Burrs



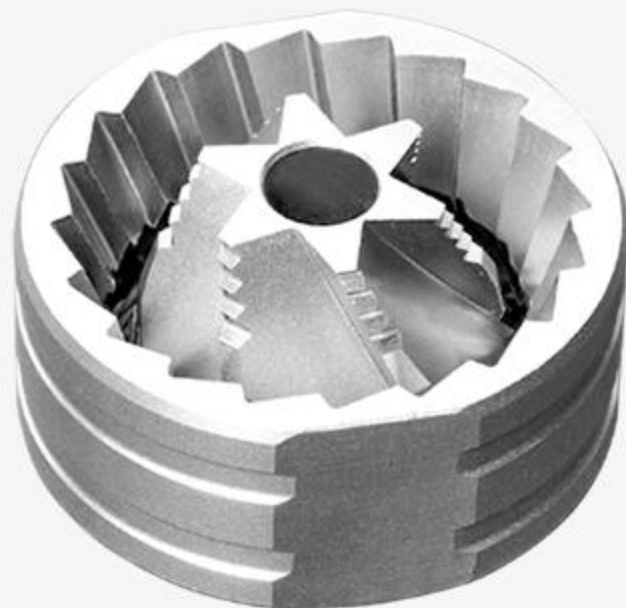
With long time effort of parametric researches and adjustments, we released this new S2C660 Burrs based on the patented philosophy of S2C (Spike To Cut) to make secondary cutting.

S2C660 Burrs is derived from the S2C 860 on Chestnut X which received unanimous praise from coffee industry since its release.

TIMEMORE design team has reduced the size and fine-tuned the parameters to improve overall grinding effect significantly.

Patent ID: ZI.202020121549.5





**Diameter**  $\Phi$  38mm

**Material** SUS 420

**Uniformity** ★★★★★

---

## Subjective Features

Clear Figurative flavors  
High-level complexity

The descriptions are subjective and for your reference only

---

**Sweetness** 4

---

**Body** 5

---

**Balance** 3

---

**Aftertaste** 3

---

**Flavor Clarity** 5

---

**Clean** 3

---



## Why CNC stainless steel Burrs?

Stainless steel burr is precision CNC cutting molding, sharp burr can cut beans fast and evenly, easy to grind. Almost all professional grinders all in CNC stainless steel burrs.

## CNC Processing



Solid Aluminum Alloy supports to fix dual bearings  
Two precise bearings to fix center shaft to make sure  
high concentricity and high constancy

**Solid Texture**  
**Tight Hand Grip**



It's easy for you to hold it with matte surface  
and Diameter of 52mm Slim body

Patent ID:zi.201620488714.6

## Adjustable Coarseness for Different Needs



Patented point to Point coarseness adjustment  
To adjust coarseness precisely and meet espresso, Moka,  
Pour over and siphon, French Press etc



Espresso

**7-8** clicks



Pour over Coffee

**13-16** clicks



French Press

**17-20** clicks

## Material

### Aluminum Alloy Bean Canister

Reduce costs with reasonable design

Allow more coffee lovers enjoying the joys of grinding coffee beans



# All-aluminum Alloy Container



# Product Parameters



## NAME:

Chestnut C3 Max Pro Coffee Grinder

## CAPACITY:

Around 30g

## MATERIAL:

Aluminum Alloy + Stainless Steel + PC

## SIZE:

Body : 178mmx53mm    Handle: 161x49mm

---

**Warning:** No washing the grinder with any liquid like water. Kindly clean it with a brush

# NOTE:

C3 Pro and C3 Max Pro share the same packaging box, printed with Chestnut Series. To identify the product, please refer to the white label.



**Professional and Beautiful**





# Authenticity Statement:

**When purchasing TIMEMORE product, place your order through our authorized distributors' store please.**

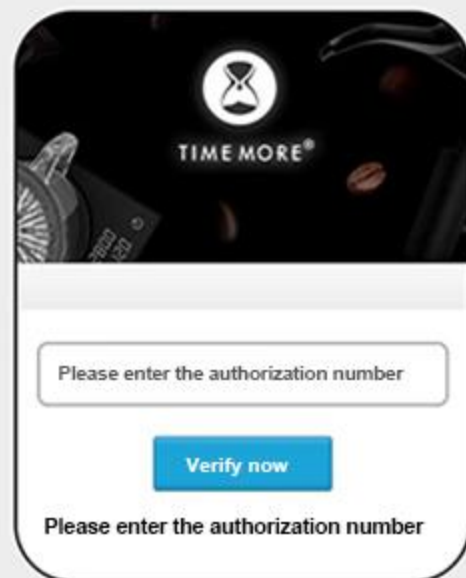
Recently fake products have been flowing into the market and their bad quality has negative impact on our brand. We have added anti-counterfeiting codes on the packaging of our grinders, scales, electric kettles etc.

Check the authenticity based on these codes as below:



- ▲ Scratch off the coating and scan

>



- ▲ Enter the anti-counterfeiting code to check authenticity

# PRECAUTIONS

1. The device is for grinding coffee beans only. DO NOT grind other material.
2. It's recommended to clean it with a brush. DO NOT wash it with water.
3. Be careful of the sharp metal burrs.
4. Keep kids from using it.
5. Keep it in a cool and dry place.
6. It's not recommended that customers disassemble or replace any part of it. If you have any special requirement, kindly operate with the advice from related professional persons.
7. Warranty is not available if you are against the above remarks
8. If you use the grinder to grind coffee beans, the device is not refundable or returnable unless there is any quality problem. Because burrs may get damaged after use.

